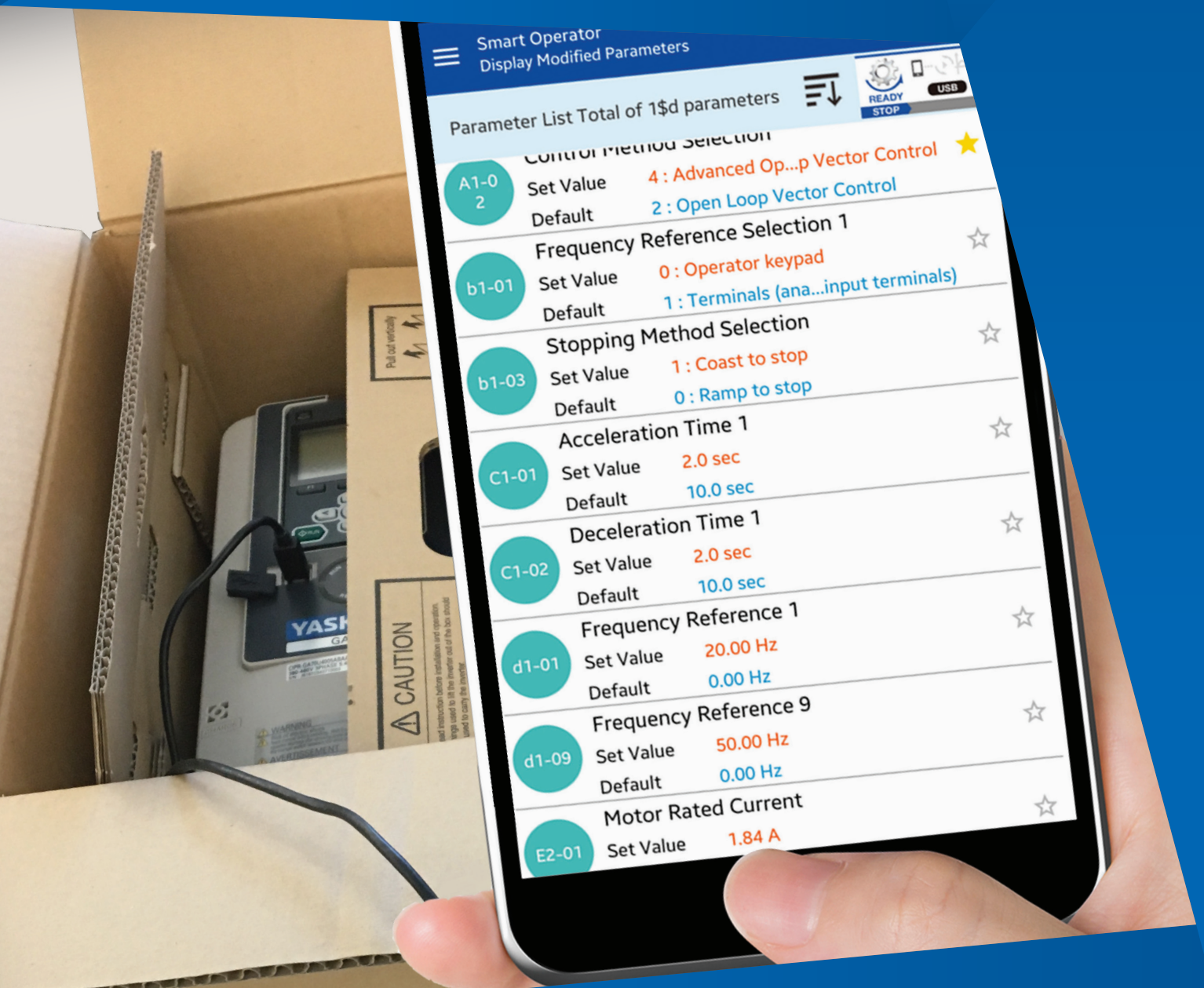


DriveWizard[®] Mobile

Get Connected - Quick Reference





Introducing The **NEW** GA800 AC Drive & DriveWizard® Mobile App

Get the app. Get your account. Get connected.

1

GET THE APP.

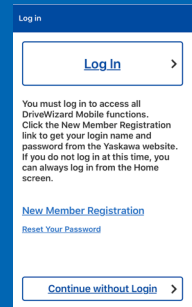
You will need a GooglePlay or Apple App Store account to download the App. Go to <https://www.yaskawa.com/dwm> or scan this code to install the new DriveWizard® Mobile App.



2

GET YOUR ACCOUNT.

Launch the DriveWizard® Mobile App and create your personal Yaskawa Drive Cloud® account. Select “New Member Registration”.



3

GET CONNECTED.

Use these instructions to connect your smartphone or tablet to the GA800 via Bluetooth¹ or USB On-The-Go cable (OTG)².

A

USB-OTG, WIRED CONNECTION (ANDROID DEVICES ONLY):
The drive is equipped with a female Type B Mini-USB port on the front cover. Use a USB-OTG (On-The-Go) cable with a matching smartphone connector. Yaskawa USB cables are listed below.
Tip: For wired connections, the smartphone or tablet provides sufficient power to program the drive; no main power is necessary.

B

FOR BLUETOOTH (WIRELESS):
Use the optional Bluetooth keypad to connect to the GA800 via Bluetooth.
Keypad Catalog Code: JVOP-KPLCC04MBB

Catalog Code	Description	
UWR01516-B	USB Cable, USB Mini-B to USB Micro-B. On-The-Go (OTG) compatible, 2-meter length. Connects the DriveWizard® Mobile app on Android smart devices to the GA800 AC Drive.	
UWR01516-C	USB Cable, USB Mini-B to USB Type-C. On-The-Go (OTG) compatible, 2-meter length. Connects the DriveWizard® Mobile app on Android smart devices to the GA800 AC Drive.	

4

WE CAN HELP.

If you have trouble with DriveWizard® Mobile, please tell us. Go to <https://www.yaskawa.com/dwmfeedback> or scan this code to give us feedback.



¹Bluetooth supports both Android and iOS. ²Wired connection only supported by Android devices.

How to Connect

There are two ways DriveWizard® Mobile connects to the GA800

A



Wired USB On-The-Go,
a direct USB-to-USB connection.

B



Wireless Bluetooth,
using the optional Bluetooth keypad.

A

Wired USB On-The-Go* Connection

Connect your USG OTG Cable

Connect your smart device to the GA800 USB port on the GA800 front cover.
Launch the DriveWizard® Mobile app.

A1

Smart Operator

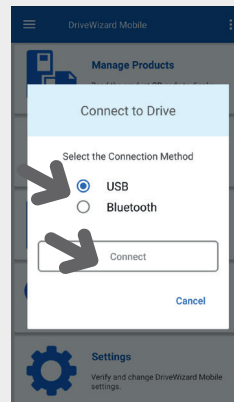
Tap Smart Operator.



A2

Select USB

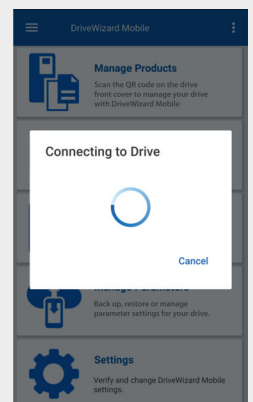
Select USB from the two connection options, then tap Connect.



A3

Establish Connection

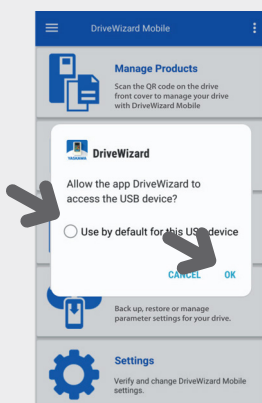
DriveWizard® Mobile will establish a connection with the drive.



A4

Allow USB Access

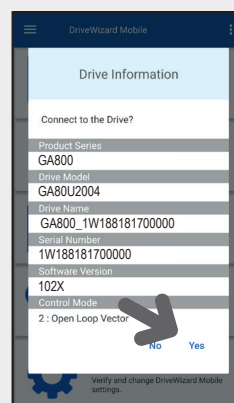
Allow the app to remember your connection method if you choose. Tap OK.



A5

Confirm Device

Upon establishing a connection, you must confirm the connection. Tap Yes, to confirm your connection.



DONE!



* USB On-The-Go (USB OTG allows your mobile device to act as the host when connecting to the drive.

B

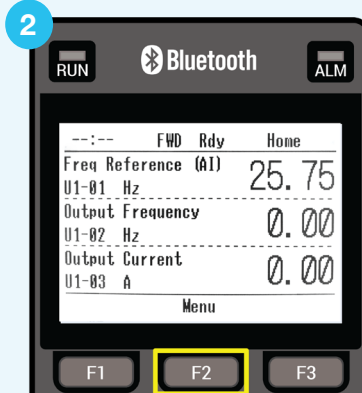
Bluetooth Connection

Enable Bluetooth on the Bluetooth Keypad

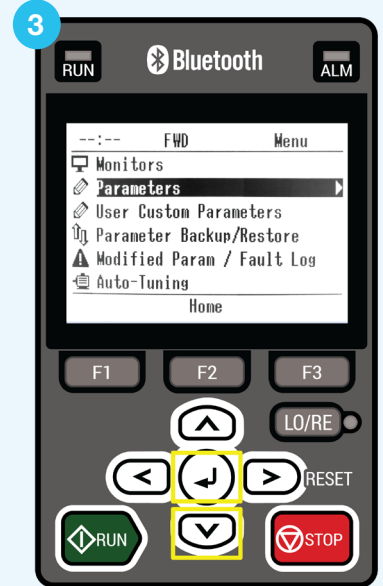
These screens show how to set GA800 parameter A1-12 to enable Bluetooth.



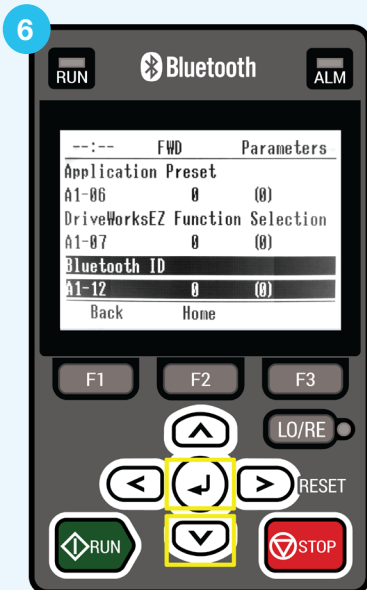
Home Screen on Power-up (Factory Default), push F2.



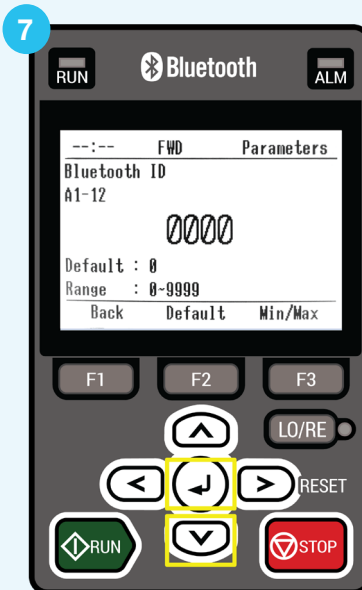
Push F2.



Push Down, then push Enter.



Push Down or Up to select A1-12, then push Enter.



Push the arrow keys to set the Bluetooth ID, then push Enter when done. Set a non-zero value to enable Bluetooth.



Push F2 to return to the HOME screen.

IMPORTANT!
An A1-12 setting of "0000" disables Bluetooth.

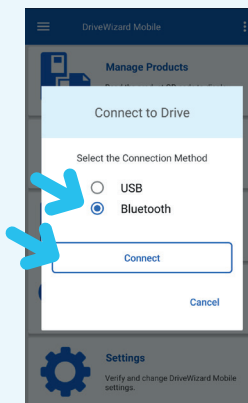
Connect DriveWizard® Mobile to the Drive

Use Drive Wizard® Mobile and the optional Bluetooth Keypad with your smartphone or tablet to connect with the Yaskawa GA800 AC drive.

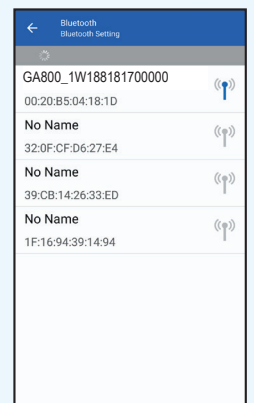
10 Smart Operator
Launch the DriveWizard® Mobile app, Tap Smart Operator.

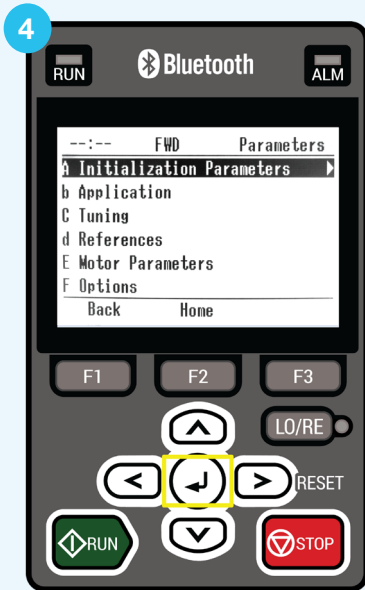


11 Select USB
Select Bluetooth from the two connection options, then tap Connect.
Note: This step is not displayed or required for iOS devices.

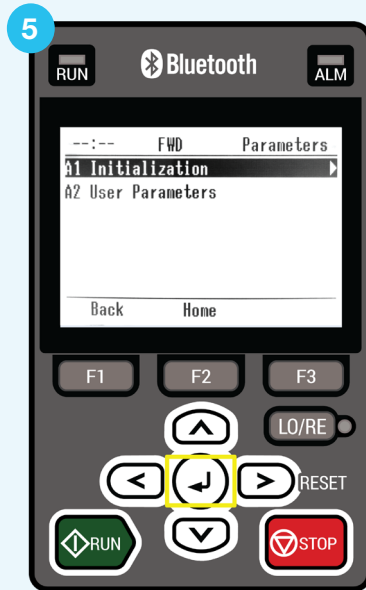


12 Select Drive
Choose a drive from the list that matches your drive serial number.
Tip: You can press **F2 [Device Name]** on the keypad to get the drive serial/Device Name.

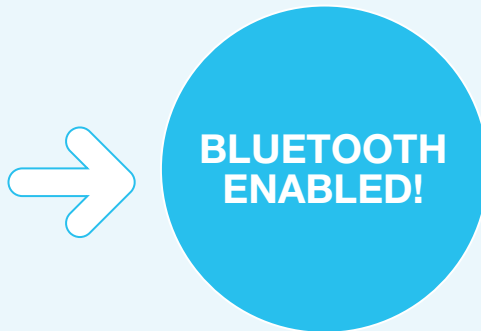
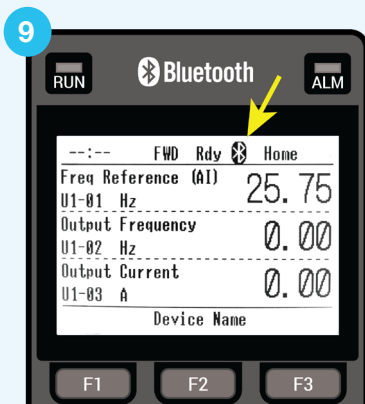




Push Enter.



Push Enter.

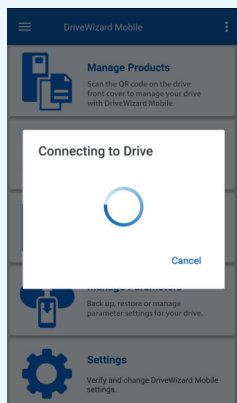


WAIT 60 seconds or unplug and reconnect the keypad to immediately broadcast Bluetooth. The Bluetooth icon indicates Bluetooth is ON.

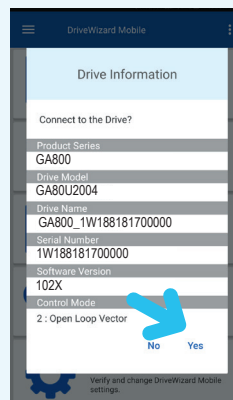


13 Establish Connection

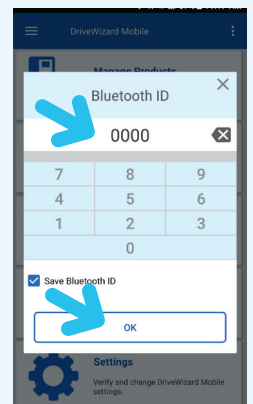
DriveWizard® Mobile will connect to the drive via Bluetooth.



14 Confirm Drive
Tap Yes to confirm the Bluetooth connection.



15 Bluetooth ID
A Bluetooth ID is required to complete the connection process. Enter the Bluetooth ID from Step 7, then tap OK.





Yaskawa is the leading global manufacturer of low and medium voltage variable frequency drives, servo systems, machine controllers and industrial robots. Our standard products, as well as tailor-made solutions, are well known and have a high reputation for outstanding quality and reliability.